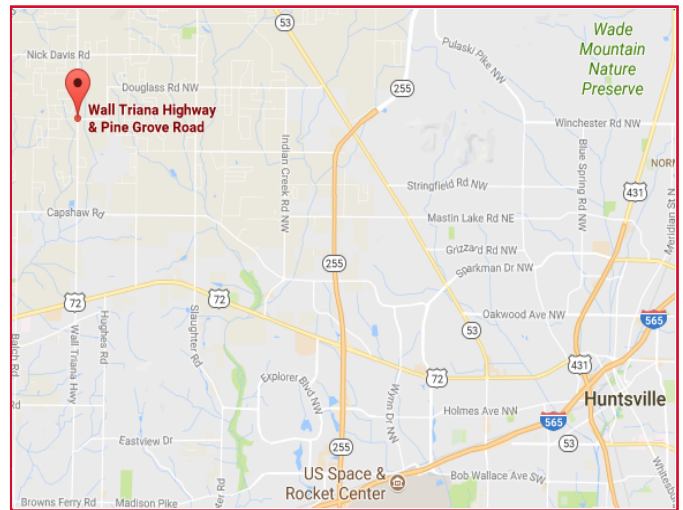


The Shops at Pine Grove

SEQ of Wall Triana Hwy and Pine Grove Road | Madison, Alabama | 35757



- 56,000 square foot neighborhood center anchored by Publix Super Market under construction
- Located adjacent to planned \$45M high school with estimated enrollment of 3,500 students
- Huntsville MSA is third largest city in Alabama
- Over 1000 new homes added in the Trade Area since 2014



DEMOGRAPHIC PROFILE



	1 mi	3 mi	5 mi
2018 Estimated Population	4,674	30,770	76,815
2023 Population Projection	4,850	31,962	79,971
2018 Estimated Households	1,761	11,765	29,273



	1 mi	3 mi	5 mi
2018 Average Household Income	\$101,949	\$109,019	\$113,171
2018 Median Household Income	\$94,397	\$93,339	\$97,617

For More Information Call:

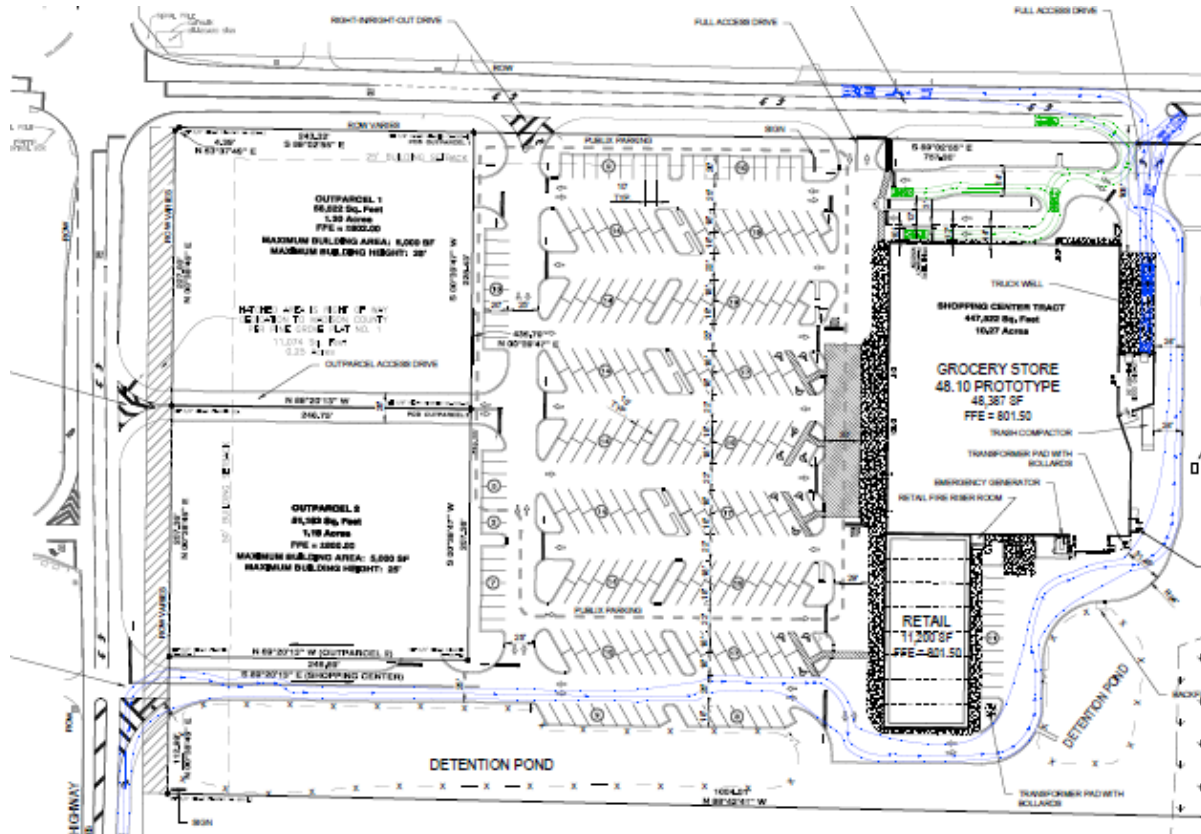
Scott Lindstrom 678.770.2210 (outparcels)
 Bob Peck 407.898.0117

watkinsreg.com

1958 Monroe Drive NE
 Atlanta | Georgia | 30324
 404.872.8666



The Shops at Pine Grove



SQ. FT.	STATUS
48,387 SF	Publix
2,000 SF	Allure Nail Spa
1,190 SF	Great Clips
1,206 SF	AVAILABLE
1,206 SF	AVAILABLE
1,400 SF	AVAILABLE
1,400 SF	AVAILABLE
1,400 SF	AVAILABLE
1,400 SF	AVAILABLE

For More Information Call:

Scott Lindstrom 678.770.2210 (outparcels)

Bob Peck 407.898.0117

watkinsreg.com

1958 Monroe Drive NE

Atlanta | Georgia | 30324

404.872.8666

