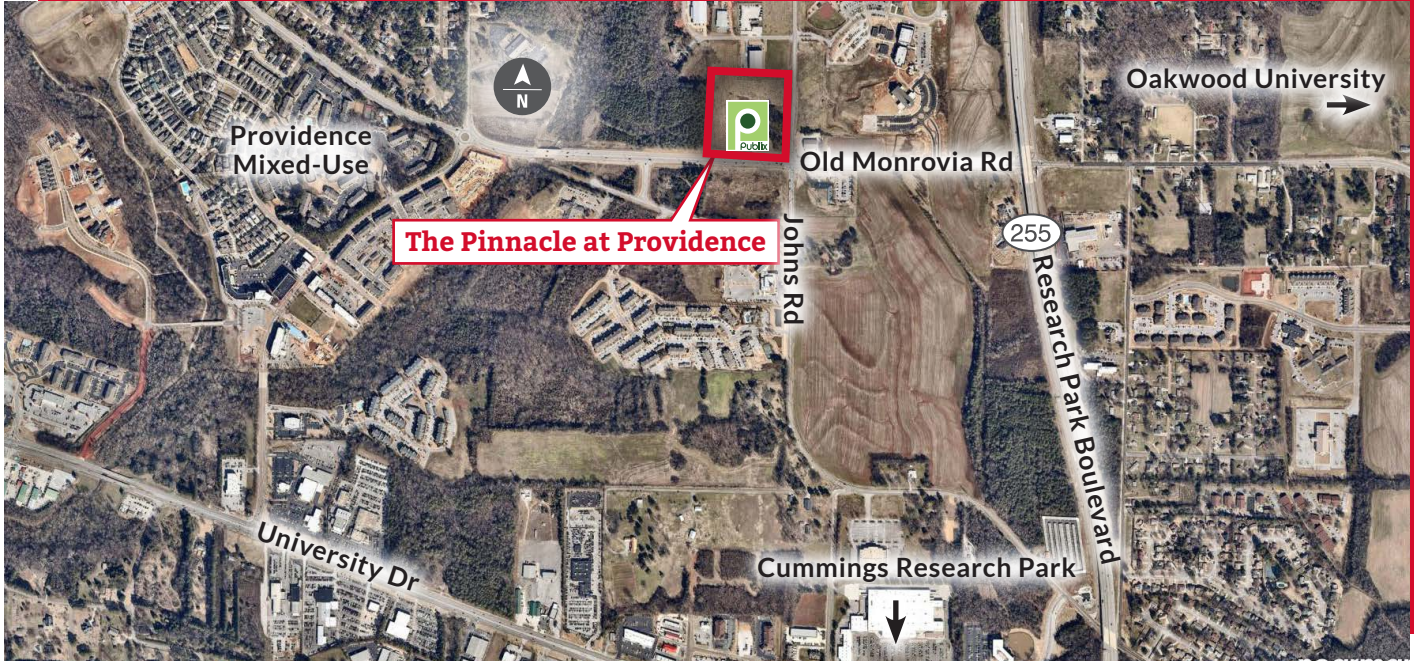
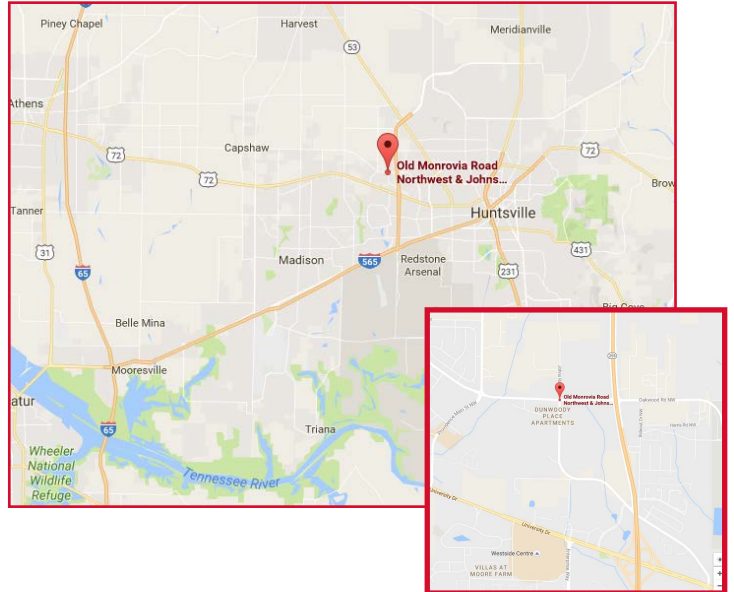


# The Pinnacle at Providence

Old Monrovia Rd & Johns Rd | Huntsville, Alabama | 35806



- Proposed 59,600 square foot neighborhood center anchored by Publix Super Market
- Located at entrance of Providence, a master-planned community including multi-family, retail, restaurants and office
- Huntsville MSA is fourth largest city in Alabama
- Four colleges within primary trade area enroll nearly 20,500 students
- Situated near Cummings Research Park and U.S. Army Redstone Arsenal, two of the city's largest business parks
- Technology, space, defense and medical are primary professional fields
- Trade Area Median income \$114,000



**DEMOGRAPHIC PROFILE**



	1 mi	3 mi	5 mi
2016 Estimated Population	4,100	35,500	105,500
2021 Population Projection	4,400	37,500	111,100
2016 Households	2,200	16,000	44,800



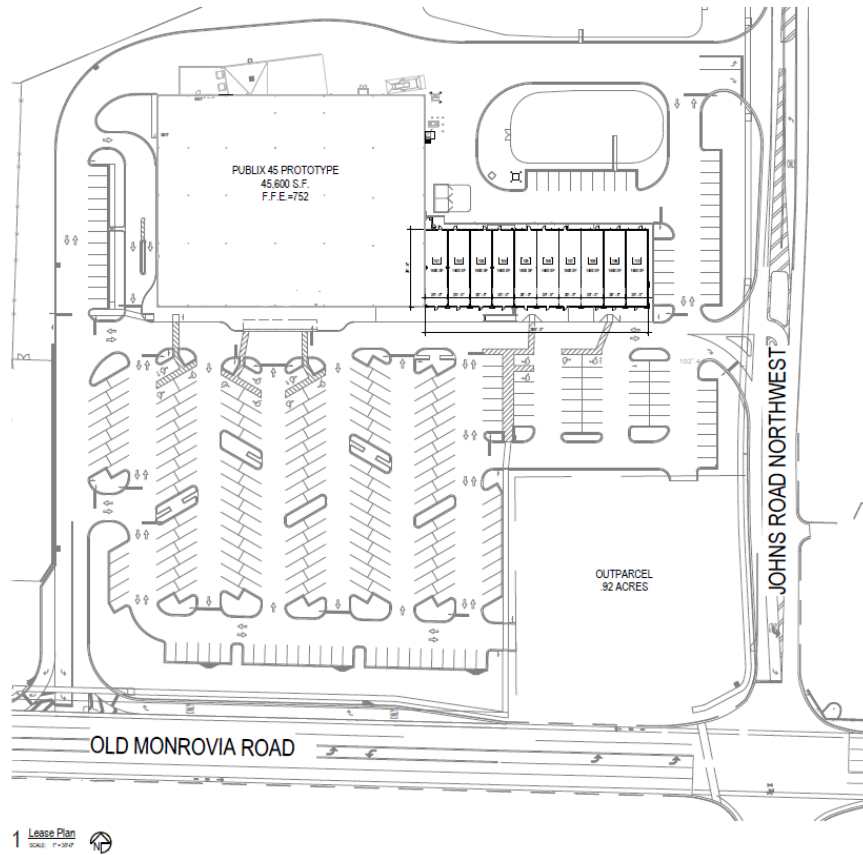
	1 mi	3 mi	5 mi
2016 Average Household Income	\$89,800	\$78,700	\$79,600
2016 Median Household Income	\$66,500	\$61,900	\$63,900

**For More Information Call:**  
 Scott Lindstrom 404.920.5010  
 Bob Peck 407.898.0117

[watkinsreg.com](http://watkinsreg.com)  
 1958 Monroe Drive NE  
 Atlanta | Georgia | 30324  
 404.872.8666



# The Pinnacle at Providence



Suite#	SQ. FT.	STATUS
100	45,600 SF	Publix
200	1,400 SF	AVAILABLE
210	1,400 SF	AVAILABLE
220	1,400 SF	AVAILABLE
230	1,400 SF	AVAILABLE
240	1,400 SF	AVAILABLE
250	1,400 SF	AVAILABLE
260	1,400 SF	AVAILABLE
270	1,400 SF	AVAILABLE
280	1,400 SF	AVAILABLE
290	1,400 SF	AVAILABLE

**For Leasing Information:**

Bob Peck 407.898.0117  
rpeck@watkinsreg.com

[watkinsreg.com](http://watkinsreg.com)  
1958 Monroe Drive NE  
Atlanta | Georgia | 30324  
404.872.8666

