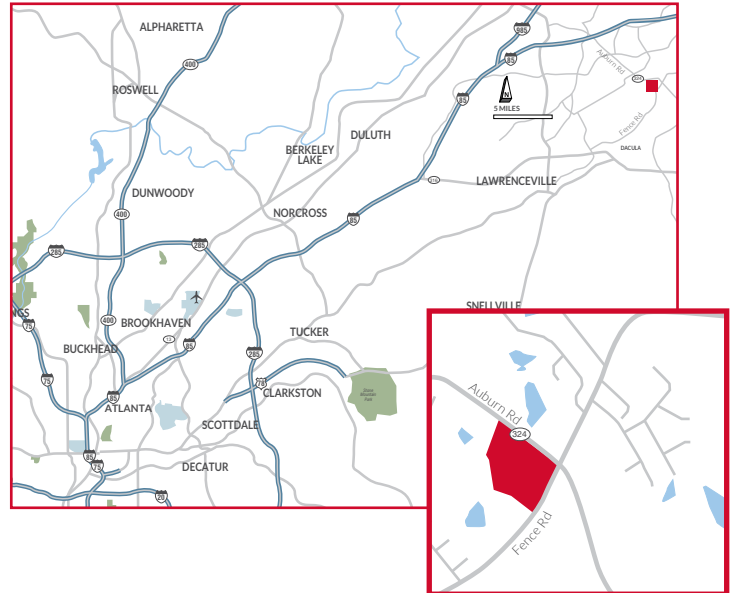


# Mulberry Village Auburn Rd (Hwy 324) & Fence Road

831 Auburn Road | Dacula, Georgia | 30019



- 75,200 square foot neighborhood center anchored by Publix Super Market
- Serves Dacula and Auburn markets
- Located in thriving Gwinnett County, one of Georgia's fastest growing counties
- Close proximity to Mall of Georgia, Hamilton Mill, Briscoe Field/Gwinnett Airport and Gwinnett Progress Center
- Excellent visibility from Highway 324/Auburn Road



DEMOGRAPHIC PROFILE



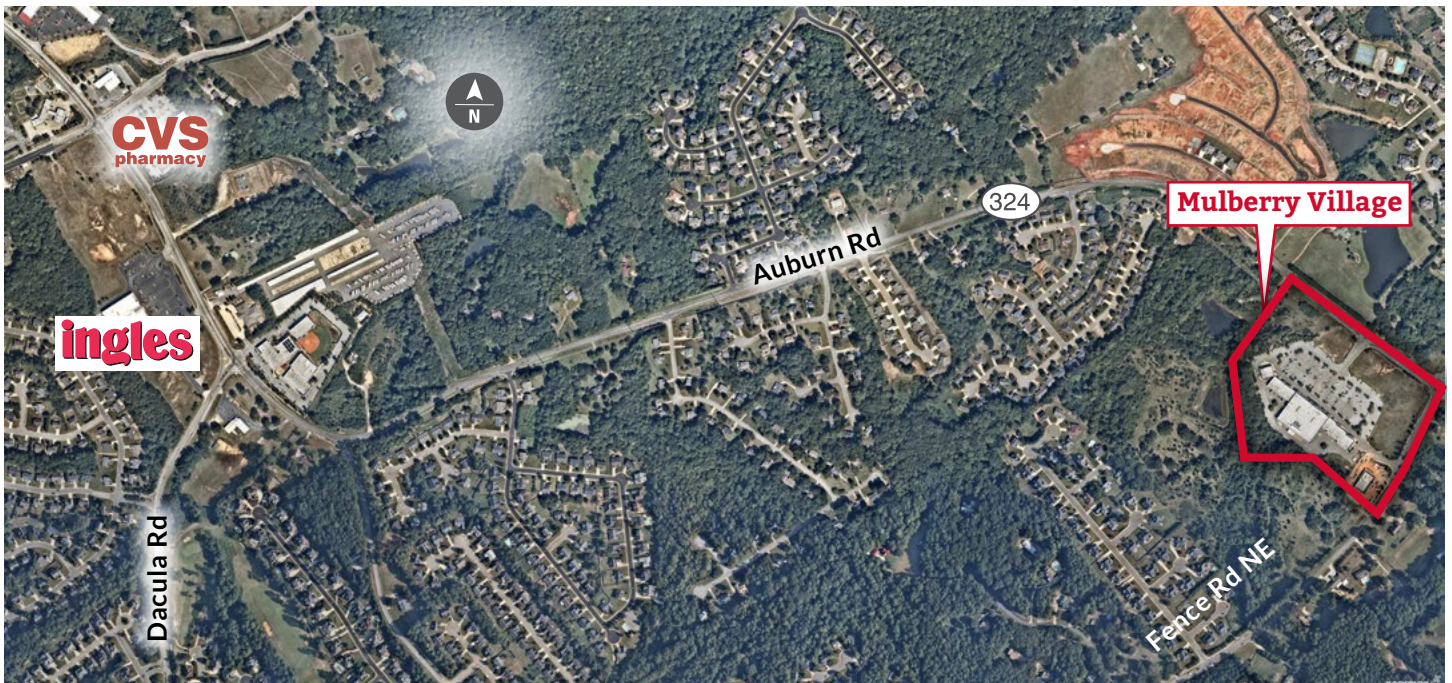
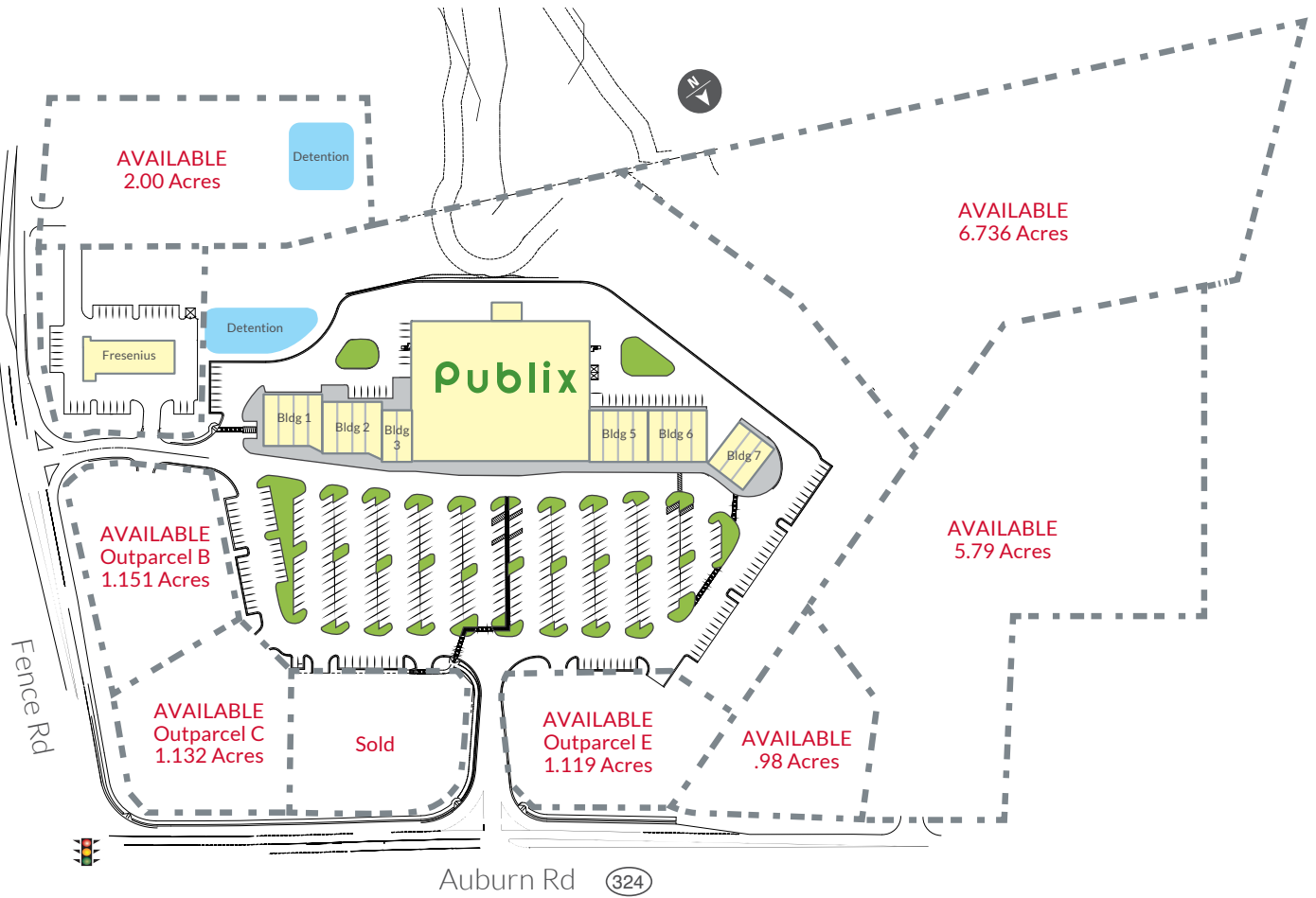
	1 mi	3 mi	5 mi
2016 Population	5,400	40,800	93,400
2021 Population Projection	5,600	42,700	97,600
Growth 2000 - 2010	20.6%	12.9%	8.7%



	1 mi	3 mi	5 mi
2016 Average Household Income	\$100,900	\$104,800	\$92,300
2016 Median Household Income	\$80,300	\$91,200	\$79,600



# Mulberry Village

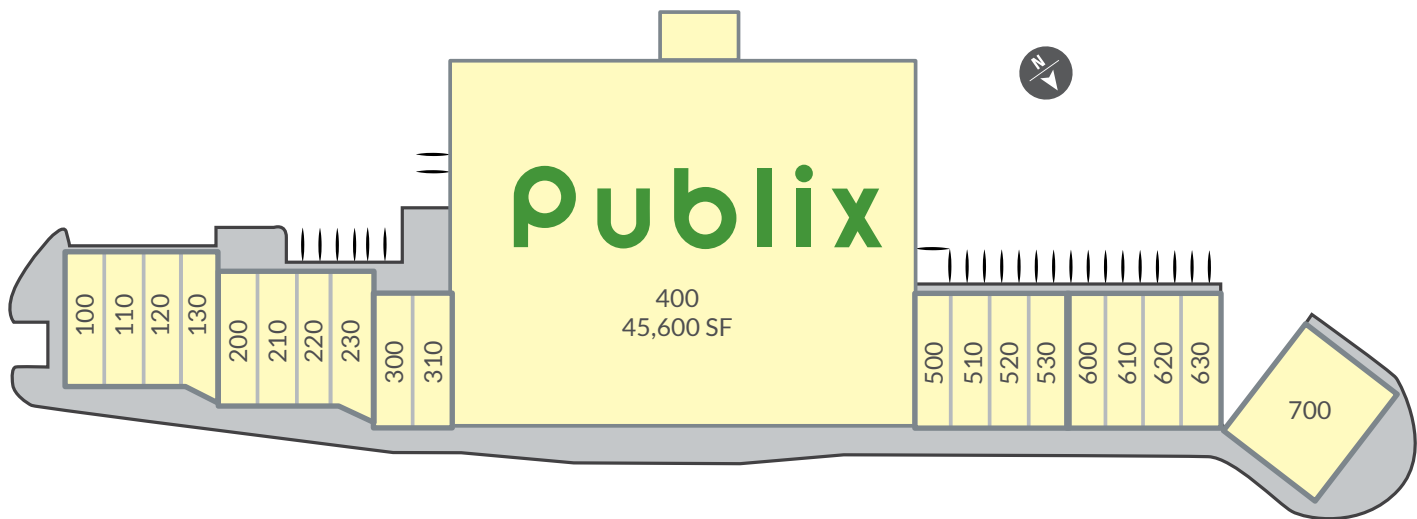


For More Information Call:  
 Angie Akins 678.725.1514  
 Rosemary Beck 404.229.9550

watkinsreg.com  
 1958 Monroe Drive NE  
 Atlanta | Georgia | 30324  
 404.872.8666



# Mulberry Village



SUITE #	SQ. FT.	STATUS
100	1,400 SF	9 Round Fitness & Kick Boxing
110	1,400 SF	AVAILABLE
120	1,400 SF	AVAILABLE
130	1,500 SF	AVAILABLE
200	1,400 SF	AVAILABLE
210	1,400 SF	AVAILABLE
220	1,200 SF	Dacula Hair Salon
230	1,700 SF	AVAILABLE
300	1,400 SF	AVAILABLE
310	1,400 SF	AVAILABLE
400	45,600 SF	Publix
500	1,400 SF	AVAILABLE
510	1,400 SF	AVAILABLE
520	1,400 SF	Tropical Nails
530	1,400 SF	State Farm
600	1,400 SF	Subway
610	1,400 SF	Peking Chinese
620	1,400 SF	Groom And Board
630	1,400 SF	Groom And Board
700	4,200 SF	Maria's Tex Mex Restaurant

For More Information Call:

Angie Akins 678.725.1514

Rosemary Beck 404.229.9550

[watkinsreg.com](http://watkinsreg.com)

1958 Monroe Drive NE

Atlanta | Georgia | 30324

404.872.8666

